

DOT PEEN PORTABLE MARKING SYSTEM

e1 p63c



+ ULTRA COMPACT

- Handy and balanced
- Ergonomic handle
- Lightweight (2.6kg - 4.4 lbs)
- Transport suitcase
- Marking window 60 x 25 mm - 2.4 x 1 in

+ POWERFUL

- Marking on difficult to access parts
- Marking on all types of material and difficult surface conditions
- Precise and accurate guides
- Marking speed and power



+ ROBUST AND RELIABLE

- Light and robust cast aluminium body and handle

+ INTUITIVE

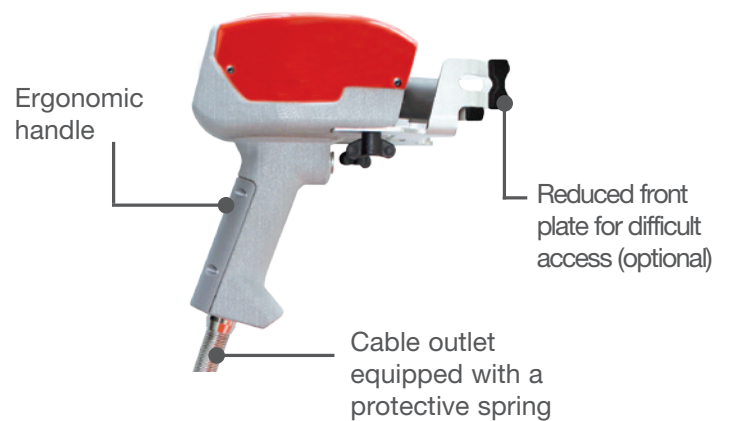
- Simplified navigation software
- Color screen

FULL PACKAGE

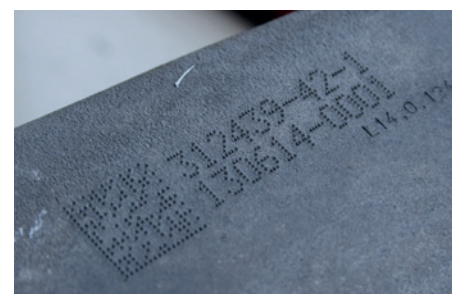
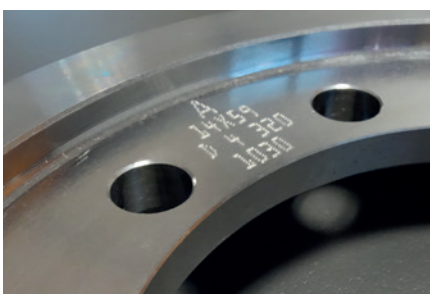


- + e1 controller
- + Transport suitcase
- + Maintenance kit
- + Accessories and operating instructions

E1 P63C CHARACTERISTICS

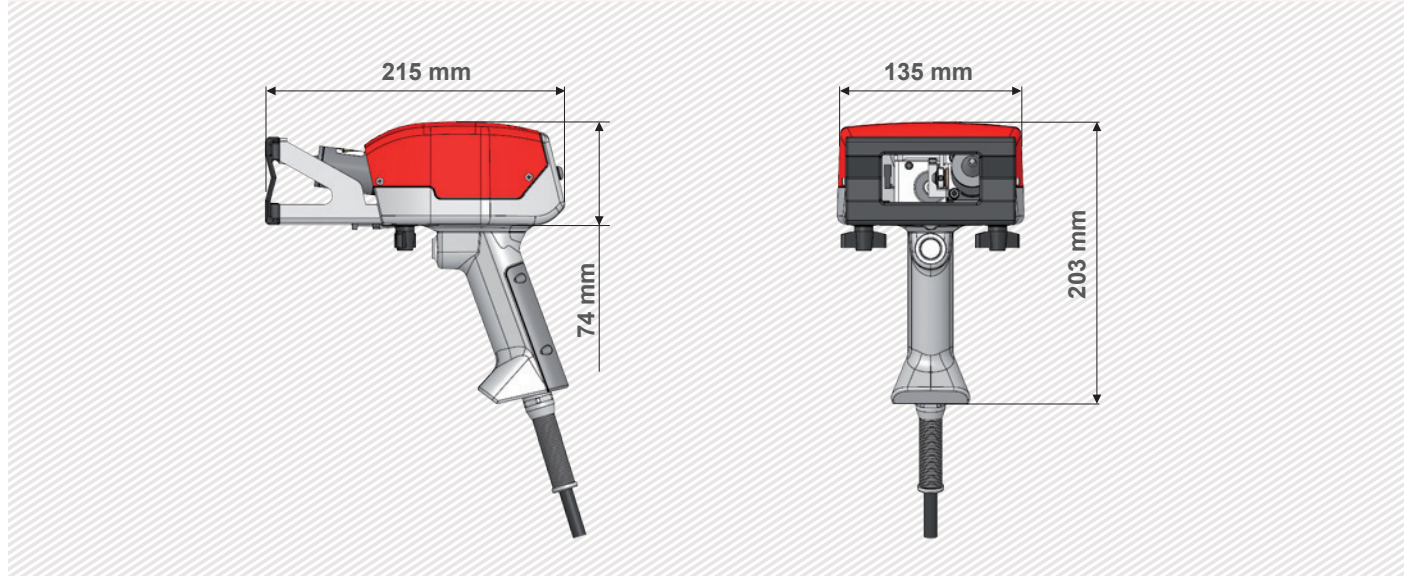


DOT PEEN MARKING EXAMPLES



TECHNICAL & MECHANICAL FEATURES

e1 p63c	
Marking window	60 x 25 mm - 2.4 x 1 in
External dimensions	135 x 215 x 203 mm - 5.3 x 8.5 x 8 in
Weight	2,6 kg - 4.4 lbs
Stylus	Tungsten carbide
Machine / controller cable length	2,5 m - 6.5 ft



OPTIONS



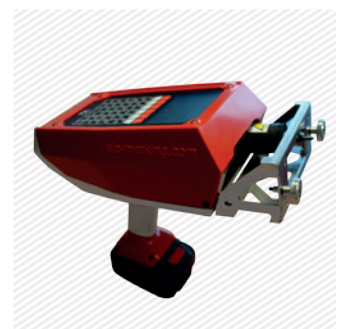
Hook and balancing system



Column base



Reduced and adjustable front plate



Front plate with permanent magnets



Datamatrix reader



Wireless barcode reader



Maintenance kit

Please consult us if a specific configuration is not published in the table attached.

SIC Marking designs customized and turnkey solutions for all industrial sectors. Our design offices produce machines in compliance with your specifications and your industrial standards.

E1 CONTROL UNIT

The e1 controller

- USB port (allows you to easily transfer your marking files)
- Fully programmable
- Small size
- Marking diversity (DataMatrix, circular, alphanumeric, logos ...)
- Membrane protected industrial keyboard



+ Ergonomic handle



+ USB Port



+ Color screen



+ Transport suitcase



Technical & electronic features

e1 controller	
Dimensions	301 x 121 x 87 mm - 11.8 x 4.8 x 3.4 in
Weight	2 kg - 4.4 lbs
LCD screen	HD color, 70 x 54 mm - 2.7 x 2.1 in
Keyboard	49 keys, membrane protection
Power	100 Watt
Power supply	100-240 VAC, 50-60 Hz
Communication ports	USB
Inputs-outputs	Jack socket
PC software	Creation, backup and transfer of logo files



APPLICATIONS

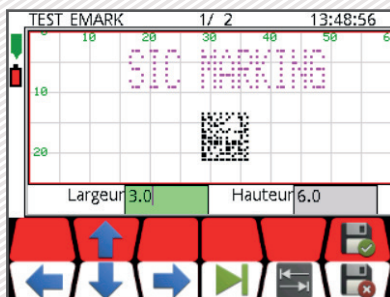
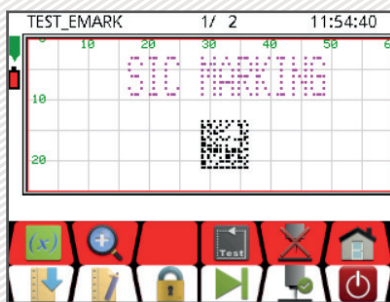


E1 RANGE SOFTWARE

Software features

Memory	>100 Mo
Variable	Alphanumeric, incrementation, timestamp, barcode
Logos	Download from a PC or USB key
Fonts	Arial, Comic, Comic_B, Courier, OCR, OCR_BOLD, OCRA, 4x6
Style	Angular, radiant, linear, radial, datamatrix, logo
Character Size	From 1 mm to 40 mm (limited following marking window)
Impact Force	9 adjustable levels
Depth	Up to 0,3 mm (according to the material)
Resolution Between Dots	0,05 mm MAX
Password	2 security levels

Icon programming Graphic View



- + Ergonomics and quick programming
- + History function with anti-duplicate
- + Automatic or semi-automatic mode using barcode reading



Angular marking



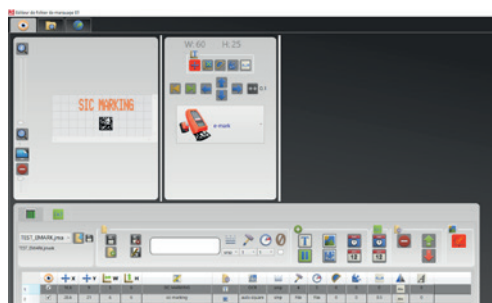
Radiant marking



Text or increment

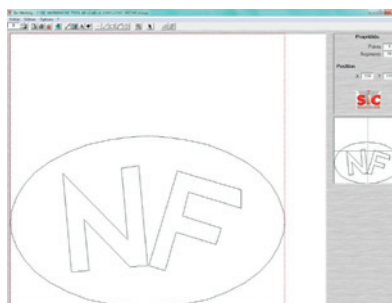
PC UTILITIES

File editor



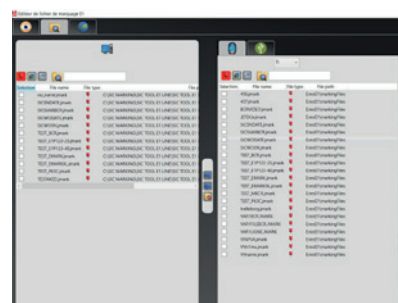
- + Creation or modification of files on PC.

Creation of logos



- + Creation of vector and matrix logos.

File manager



- + Backup and transfer of files (by USB key or by USB link).