

Laser marking workstation L-Box Easy



Superior Performance

- Marking on all material types
- Surface or hollow marking
- Standard 1D (barcodes) and 2D (data matrix) code capability
- Marks high definition logos and images
- Precise, high quality marking
- Deep marking

Secure

- Class 1 security on box closure (EN 60825-1 standard)

User-Friendly

- Ergonomic door: soft opening
- Access the marking zone from 3 sides with height of 200mm / 7.9 inches
- Large viewing window
- Reduced width

Robust and Reliable

- Component extended life expectancy >100 000 h
- Maintenance free
- Warranty up to 5 years

Fiber Laser

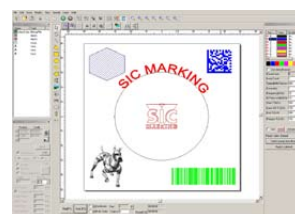
- Pulsed Ytterbium fiber laser source
- Fiber source of 20W
- Fast, high quality marking



FIBER UNIT & SOFTWARE INTERFACE: SIC LASER PC



- User friendly Windows interface
- USB connection with the control rack "FIBER UNIT"
- Production mode
- Advance user mode
- Marking of Standard 1D (bar codes) and 2D (data matrix), all "tff" fonts, images
- Database functions integrated



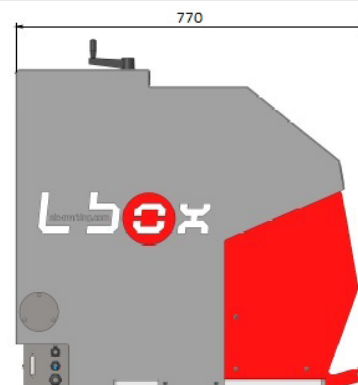
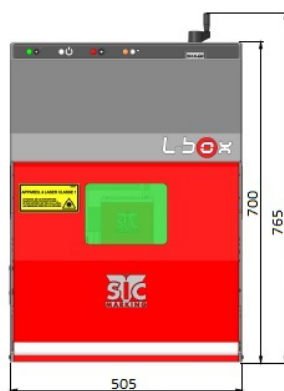
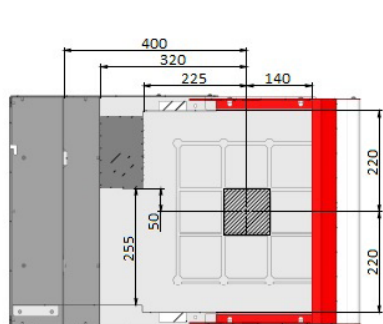
MARKING SAMPLES



LASER TECHNICAL FEATURES

L-Box Easy

Marking Window	100 x 100 mm / 3.9 inches (optional 170 x 170 mm / 6.7 inches)
External Dimensions	505 x 770 x 765 mm / 19.9 x 30.3 x 30.1 inches
Marked Parts Dimensions	Maximum Height: 223 mm / 8.7 inches Maximum Length: 440 mm / 17.3 inches
Lighting	LED lighting of the marking field
Adjustable Working Distance	Manual or power-operated column with counter and laser dots



NEW LASER SPECIFICATIONS



Wide Opening on All 3 Sides:

- Ergonomically Designed: Enhanced visibility and accessibility
- Capable of marking tall or bulky parts, length <500 mm / 19.7 inches
- ⚠ (Trained employees and protective equipment required)

T-Grooved Working Table:

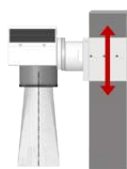
- Working area is 365 x 440 mm / 14.4 x 17.3 inches



OPTIONS



Chassis for the
Integration of Station
Components



Z-Axis Power-
Operated Column



Swing Plate



Parts Loading
Drawer



Fume Extraction
System



Rotary (D)



Barcode and Data
Matrix Reader



SIC Marking®

ZAC Bel-Air
195 Rue des Vergers
69480 Pommiers - France
Tél. : +33 (0)4 72 54 80 00
Fax : +33 (0)4 78 47 39 40
www.sic-marking.com
info@sic-marking.com

